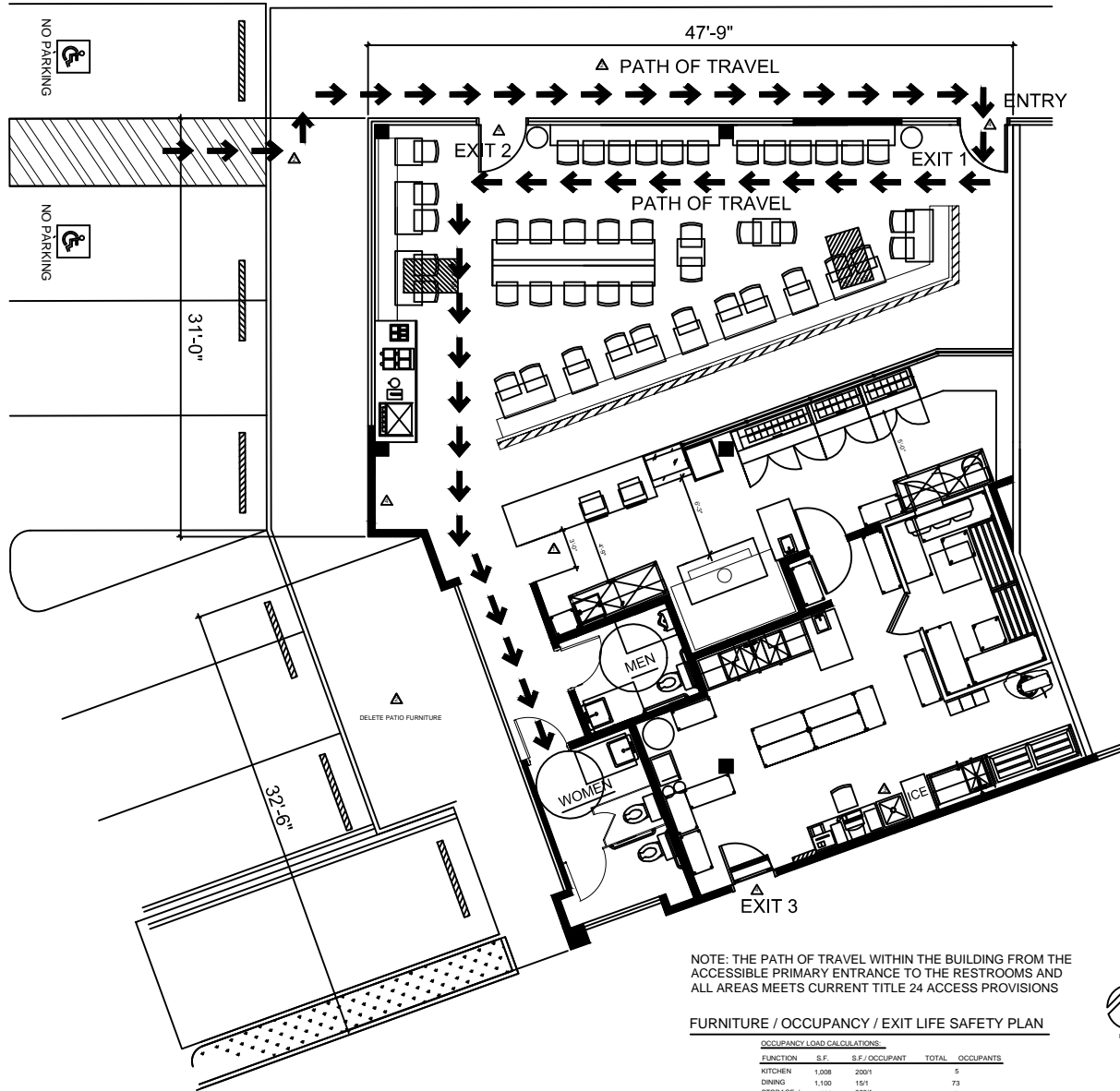


SEE SHEET A0.1 & A0.2
FOR A.D.A. PARKING
SPACE DETAILS.



NOTE: THE PATH OF TRAVEL WITHIN THE BUILDING FROM THE
ACCESSIBLE PRIMARY ENTRANCE TO THE RESTROOMS AND
ALL AREAS MEETS CURRENT TITLE 24 ACCESS PROVISIONS

FURNITURE / OCCUPANCY / EXIT LIFE SAFETY PLAN

OCCUPANCY LOAD CALCULATIONS:				
FUNCTION	S.F.	S.F. / OCCUPANT	TOTAL	OCCUPANTS
KITCHEN	1,008	200/1		5
DINING	1,100	15/1		73
STORAGE / RESTROOMS	300	300/1		1
				79

Furniture Plan Legend

NEW FURNITURE & EQUIPMENT



Issued For Tenant
Review and Approval
Building Department
Submitted:
Issued For Bid:
Issued For
Construction:

Revisions / Date:

Health Dept. Revision 12-08-13
Building Dept. Revision 1-10-14
Landmark Revision 2-25-14
Tenant Revision 5-07-14

Required Egress Width

1. THE MEANS OF EGRESS WIDTH SHALL NOT BE LESS THAN REQUIRED BY SECTION 1005. THE TOTAL WIDTH OF MEANS OF EGRESS IN INCHES SHALL NOT BE LESS THAN THE TOTAL OCCUPANT LOAD SERVED BY THE MEANS OF EGRESS MULTIPLIED BY 0.2 INCHES PER OCCUPANT FOR OTHER NON-STAIRWAY EGRESS COMPONENTS. THE WIDTH SHALL NOT BE LESS THAN SPECIFIED ELSEWHERE IN THIS CODE. MULTIPLE MEANS OF EGRESS SHALL NOT REDUCE THE REQUIRED CAPACITY TO LESS THAN 80 PERCENT OF THE REQUIRED CAPACITY. THE MAXIMUM CAPACITY REQUIRED FROM ANY STORY OF A BUILDING SHALL BE MAINTAINED TO THE TERMINATION OF THE MEANS OF EGRESS.

NOTE: OCCUPANT LOAD=84 X 0.2=16.8 INCH EGRESS WIDTH

Common Path of Egress Limit

1. THE COMMON PATH OF EGRESS TRAVEL SHALL NOT EXCEED 75 FEET.

OCCUPANT AREA	EXIT 1	EXIT 2	EXIT 3	EXIT 4
DINING AREA	20	20	30	45
KITCHEN AREA	55	45	20	20
PREP AREA	65	55	30	10

THE MAXIMUM MEANS OF EGRESS IS FROM THE WOMEN'S RESTROOM TO EXIT 1 WHICH EQUALS 75 FEET.

Exit Door Locations

1. WHERE TWO EXITS ARE REQUIRED FROM ANY PORTION OF THE EXIT ACCESS, THE EXIT DOORS OR EXIT ACCESS DOORWAYS SHALL BE PLACED A DISTANCE APART EQUAL TO NOT LESS THAN 1/2 OF THE LENGTH OF THE MAXIMUM OVERALL DIAGONAL DIMENSION OF THE AREA TO BE SERVED MEASURED IN A STRAIGHT LINE BETWEEN EXIT DOORS.

EXIT DOOR NUMBER	EXIT 1	EXIT 2	EXIT 3	EXIT 4
1	37	37	49	70
2	49	17	17	60
3	70	60	40	40

THE MAXIMUM OVERALL DIAGONAL DIMENSION OF THIS SPACE IS 86 FEET WHICH REQUIRES A MINIMUM OF 30 FEET BETWEEN AT LEAST TWO OF THE EXIT DOORS. THE MAXIMUM BETWEEN DOORS 1 AND 2 AND 1 AND 3 AND 1 AND 4, 2 AND 4, 3 AND 4, ALL EXCEEDS THE REQUIRED 30 FEET MINIMUM EXIT DOOR SEPARATION.

Plumbing Fixture Analysis Table 4.1

RESTAURANTS		URINALS		LAVATORIES	
WATER CLOSETS (FIXTURES PER PERSON)		FIXTURES PER PERSON		FIXTURES PER PERSON	
MALE	FEMALE	MALE	FEMALE	MALE	FEMALE
1: 1-50	1: 1-50	1: 1-50	1: 1-50	1: 1-50	1: 1-50
2: 51-150	2: 51-150				

THIS RESTAURANT PROVIDES 1 WATERCLOSET, 1 URINAL, AND 1 LAVATORY FOR THE MEN'S RESTROOM AND 2 WATERCLOSETS AND 1 LAVATORY FOR THE WOMEN'S RESTROOM. THIS BUSINESS PROVIDES ADEQUATE PLUMBING FIXTURES FOR THE UNIFORM PLUMBING CODE TABLE 4.1.



PIEOLOGY
3720 PACIFIC COAST HIGHWAY
TORRANCE, CALIFORNIA 90505

FURNITURE PLAN

Date: 10-14-13
Drawn By: CM

A2.0