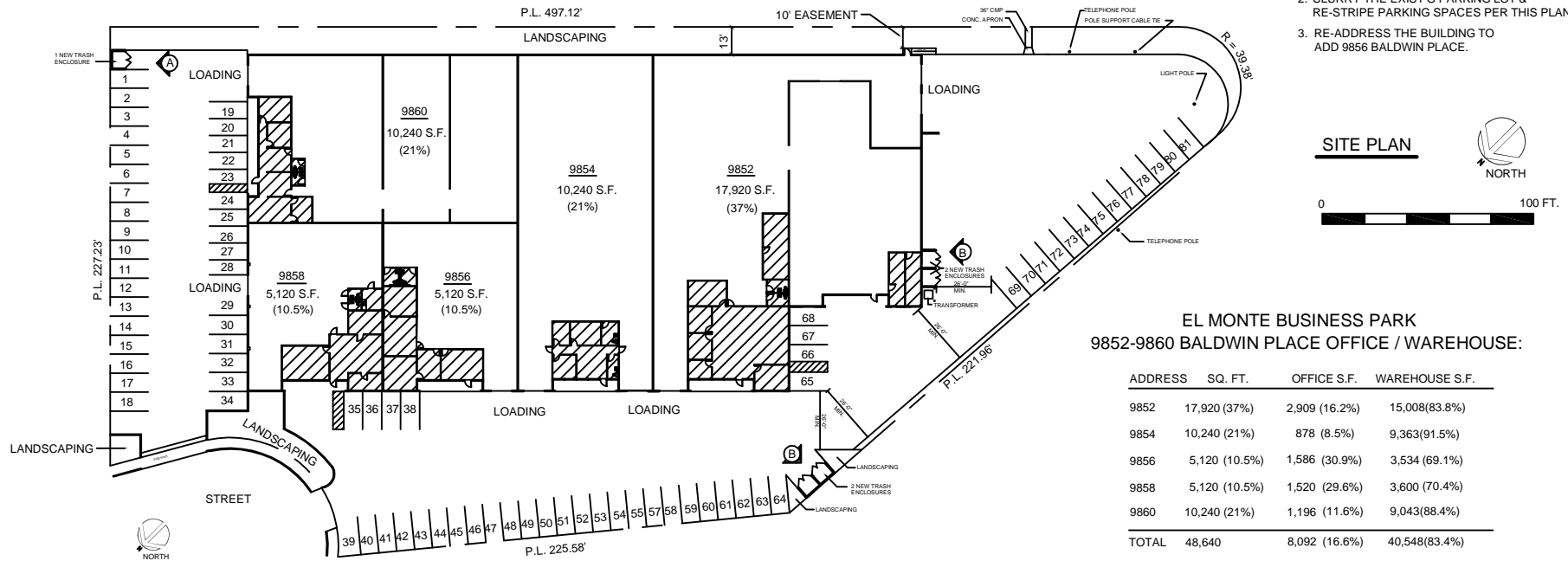


	OFFICE	8,092 S.F.	LAND AREA:	102,256	LANDSCAPING AREA REQ'D (15% OF 53,616 S.F.)	8,042 S.F.
	WAREHOUSE	40,548 S.F.	BUILDING AREA:	48,640	LANDSCAPING AREA PROVIDED:	8,102 S.F.
	TOTAL	48,640 S.F.	BUILDING COVERAGE:	47.5%	PARKING SPACES PROVIDED:	81

#### SCOPE OF WORK NOTES:

1. PROVIDE 5 NEW TRASH ENCLOSURES REQUEST EASEMENT APPROVAL TO ACCOMMODATE ENCLOSURES. SEE DETAILS THIS SHEET
2. SLURRY THE EXIST'G PARKING LOT & RE-STRIPE PARKING SPACES PER THIS PLAN.
3. RE-ADDRESS THE BUILDING TO ADD 9856 BALDWIN PLACE.



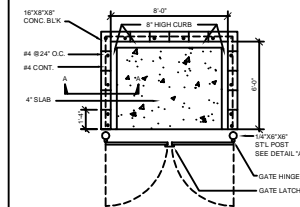
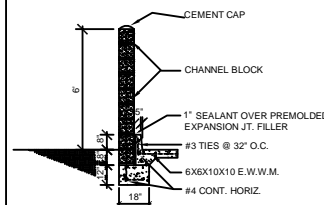
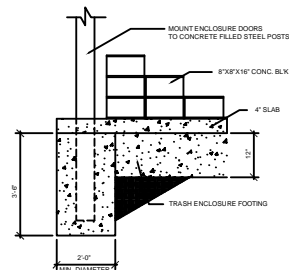
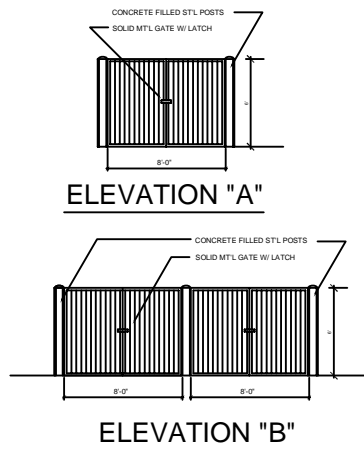
ISSUES & REVISIONS	
PLANNING DEPT. REV. 4-23-07	△
PLANNING DEPT. REV. 4-23-07	△
PLANNING DEPT. REV. 4-23-07	△
PLANNING DEPT. REV. 5-9-07	△
PLANNING DEPT. REV. 5-24-07	△

**Architectural Design Services**  
Interior Space Planning and Design  
13 Rivera  
Rancho Canyon, California 92679  
Tel: 949-888-1036 Fax: 949-888-7116



**9858 BALDWIN PLACE**  
**EL MONTE, CALIFORNIA**

**SITE PLAN**



#### TRASH ENCLOSURE NOTES:

1. LOCATION OF TRASH ENCLOSURES SHALL CONFORM TO THE REGULATIONS OF THE CITY OF EL MONTE PLANNING DEPARTMENT.
2. SURFACE OF SLAB SHALL SLOPE 1/8" PER FOOT (1%) TOWARD ENCLOSURE OPENING.
3. ALL CELLS IN MASONRY SHALL BE SOLID GROUTED.
4. FRONT PLATES SHALL BE CONSTRUCTED WITH 12"x12"X8" BLOCK.
5. 16"x8"x8" STL POST, CONCRETE FILLED WITH 1/2" CLEARANCE BETWEEN POST AND WALL. WELD GATE HINGES TO TUBE. MIN. WALL & GATE HT. TO BE 6'0".
6. GATE SHALL BE SOLID METAL WITH 2"x2"x1/4" STEEL ANGLE IRON FRAME AND DIAGONAL BRACING WITH METAL HINGE CONT. WELDED TO GATE AND POST.
7. GATE LATCH TO BE 3/4" METAL PLATE WITH SLIDE BOLT ASSEMBLY WELDED IN PLACE.
8. DIMENSIONS SHOWN ARE FOR EA. SINGLE BIN ENCLOSURE WHICH ALL HAVE THE SAME IDENTICAL WALL SECTION. OVERALL DIMENSIONS MUST BE APPROVED BY THE CITY ENGINEER.

project #:	
pc file #:	
scale:	
page of sheets	
DATE:	3-23-07
sheet #:	

**S-1**